

# VFS-DH

Freestanding monitor desk mount mount  
for one/two monitors

**Elegant yet durable solution for mounting  
two monitors of up to 12kg each.**

It is suitable for flat and curved monitors  
and includes a freestanding base. It can be  
converted to support a single display.



## Set & Forget desk mounting solutions

### Ideal for:

- 2 x flat or curved displays up to 32"\* with 16:9 aspect ratio, R1500 or R1800 for seamless curvature
- 1 x flat screen up to 43" in a single display configuration



75 x 75  
100 x 100



Flat: 12kg  
Curved: 12kg

Viewing angle  
control via ball joint  
mechanism of 20°  
in any direction

Quick display release  
mechanism for easy  
installation

Tool-free  
independent display  
position adjustment  
with QuickShift™ lever

Display orientation  
landscape to portrait 360°  
rotation

Display height  
can be set to individual  
requirements at the time of  
installation

Advanced cable management

Material  
100% recyclable lightweight  
yet durable aluminium

Freestanding unit  
can be moved around easily.  
Optional bolt through kit  
available (AC-GC, sold separately)

\* Please check the physical width of your displays (maximum allowed combined width is 1456mm)

**10 year warranty**

**ATDEC** Infinite  
Mounting  
Possibilities



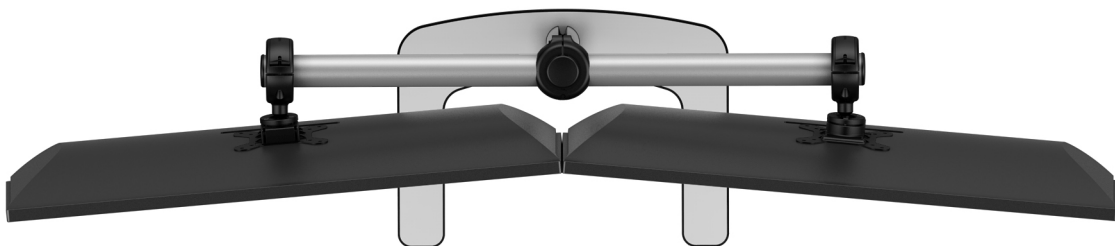


## VFS-DH

Indicative position of 2 x 32" R1800 curved monitors, 16:9\*



Indicative position of 2 x 32" flat monitors, 16:9\*



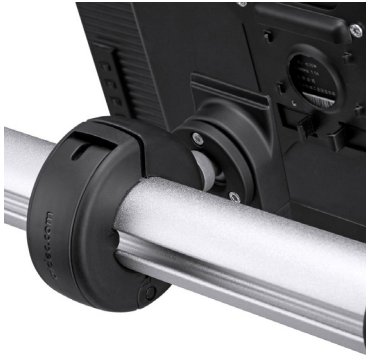
VFS-DH can support monitors up to 43" 16:9 in a single display landscape configuration.

The crossbar can be replaced with any of the supplied VESA heads & attached directly to the vertical post.

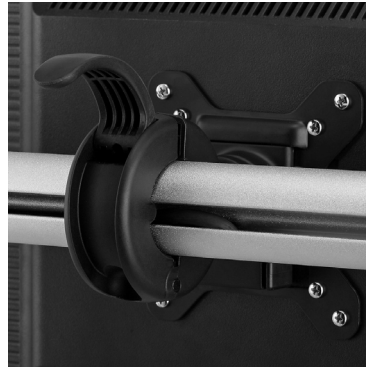
\* Please check the physical width of your displays (maximum allowed combined width is 1456mm)



## VFS-DH



Quick display release mechanism for easy installation.



Tool-free independent display position adjustment with QuickShift™ lever.



Advanced cable management.

**Grommet Clamp AC-GC**  
(sold separately)



Can be used as a bolt through option or fitted into a grommet hole (60-80mm in diameter).

**Freestanding base**  
(included)



Doesn't require desk fixing.  
Freestanding base: 422mm x 305mm.



Atdec Uncover™ is where our infinite mounting possibilities become your specific mounting solutions.



Call us on 02 8729 5000  
to discuss your next project or  
visit [atdec.com.au/workspace](https://atdec.com.au/workspace)